

Barco portacontenedores

Tipo panamax

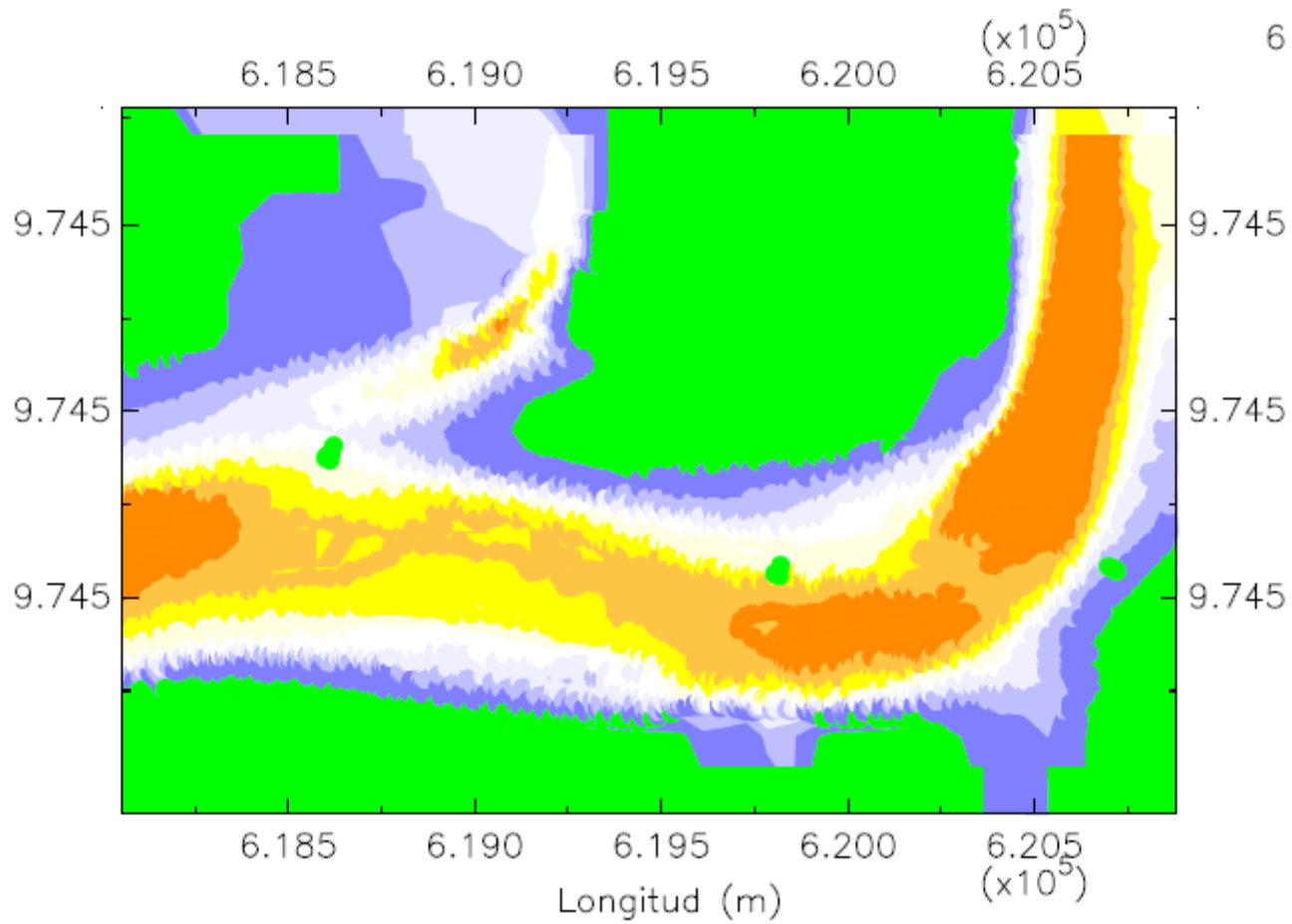
Eslora: 289 m

Manga: 32.20 m

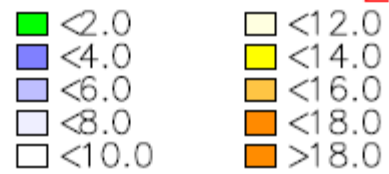
Calado: 11.60 m

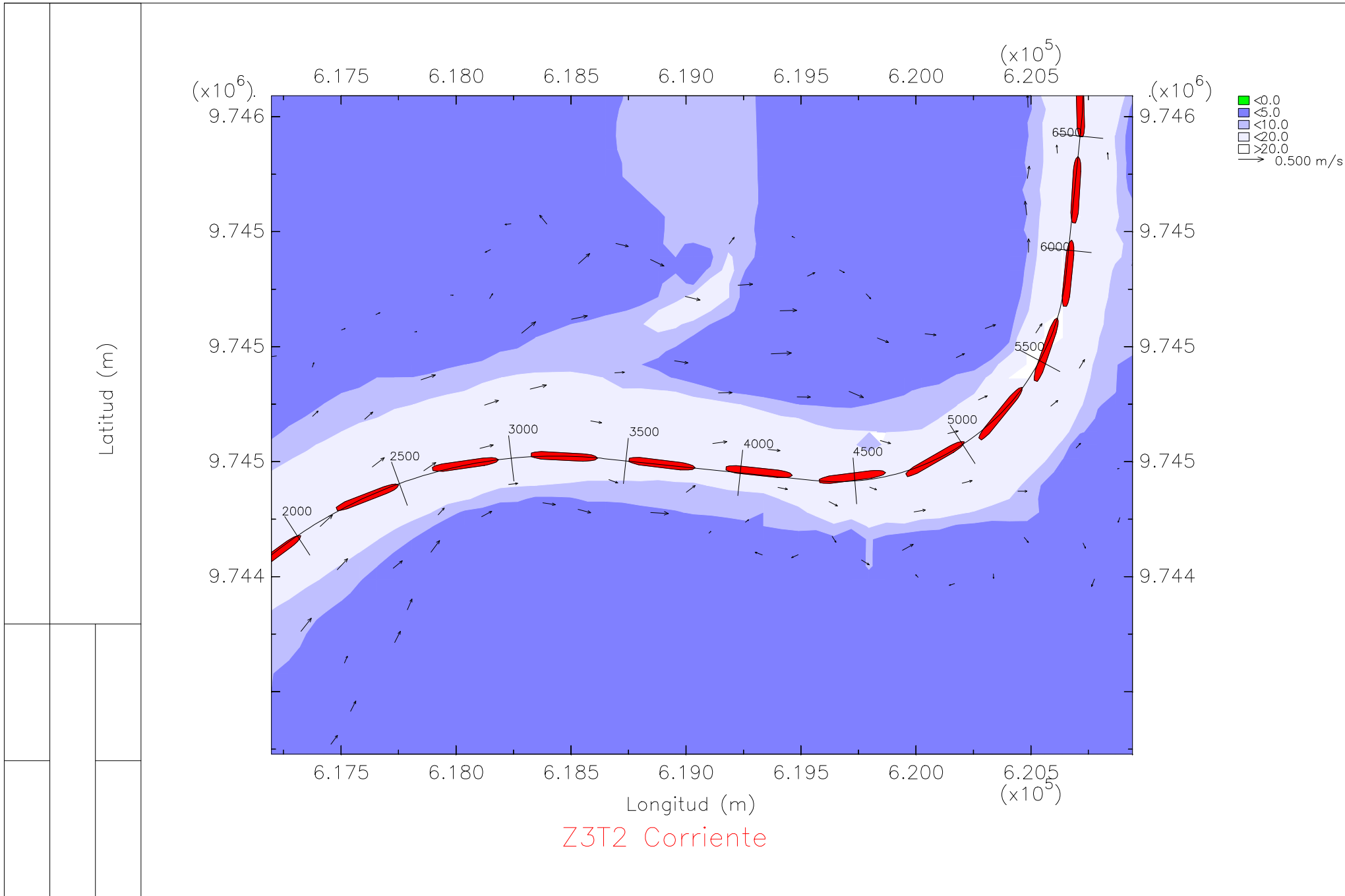
En la zona 2, tramo 2

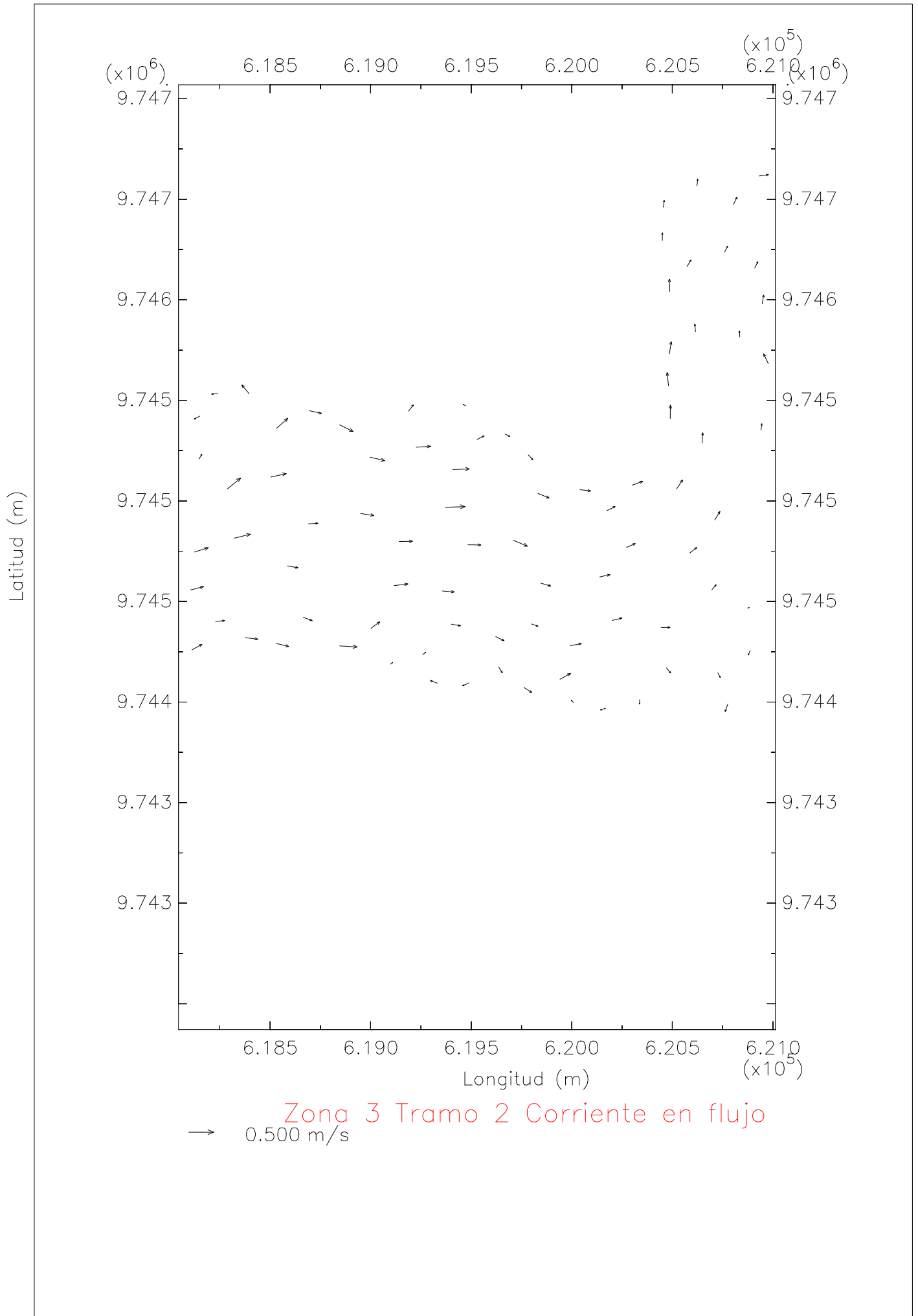
Bajo condiciones de oleaje y llenante

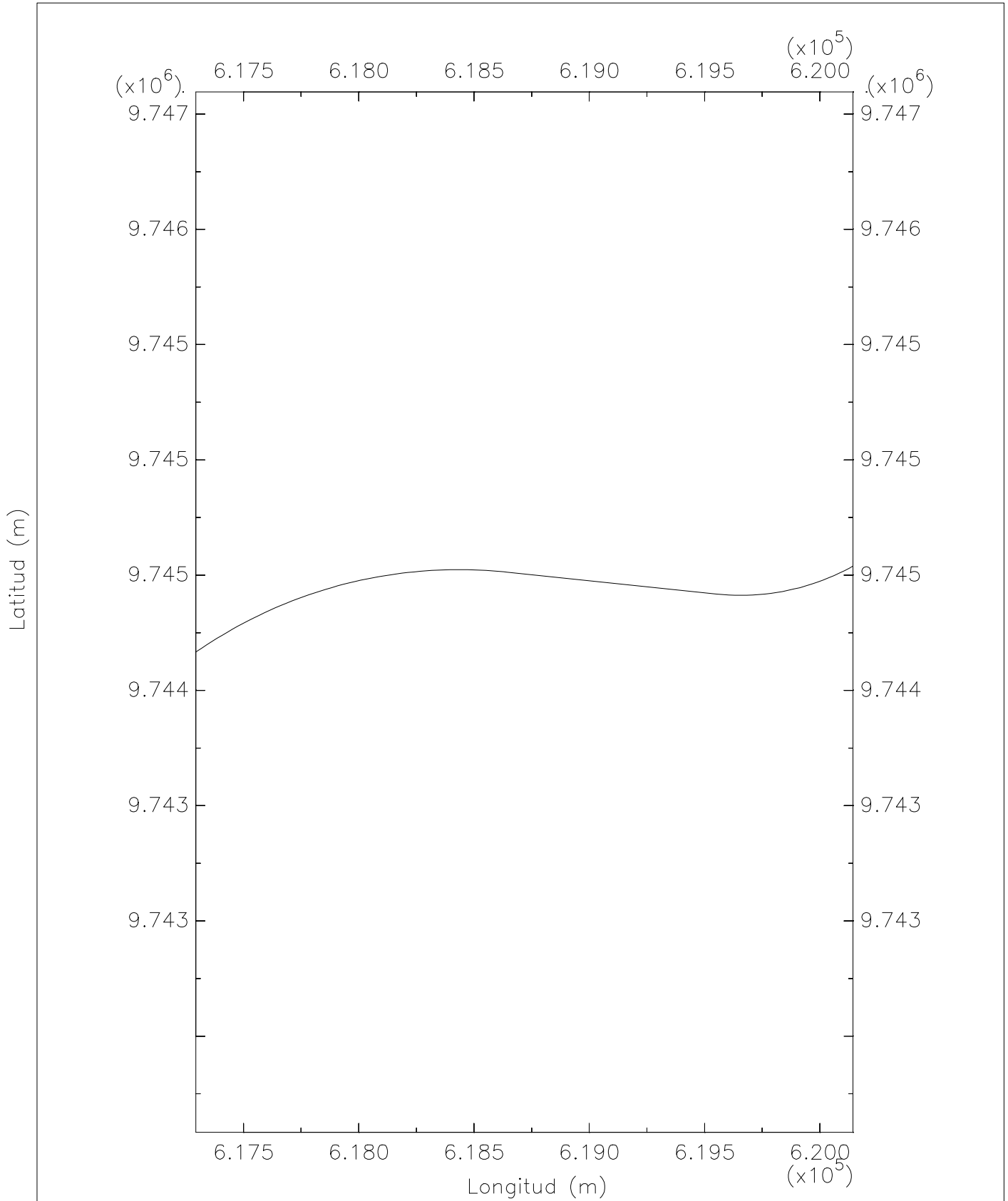


Zona 3 Tramo 2 Profundidad



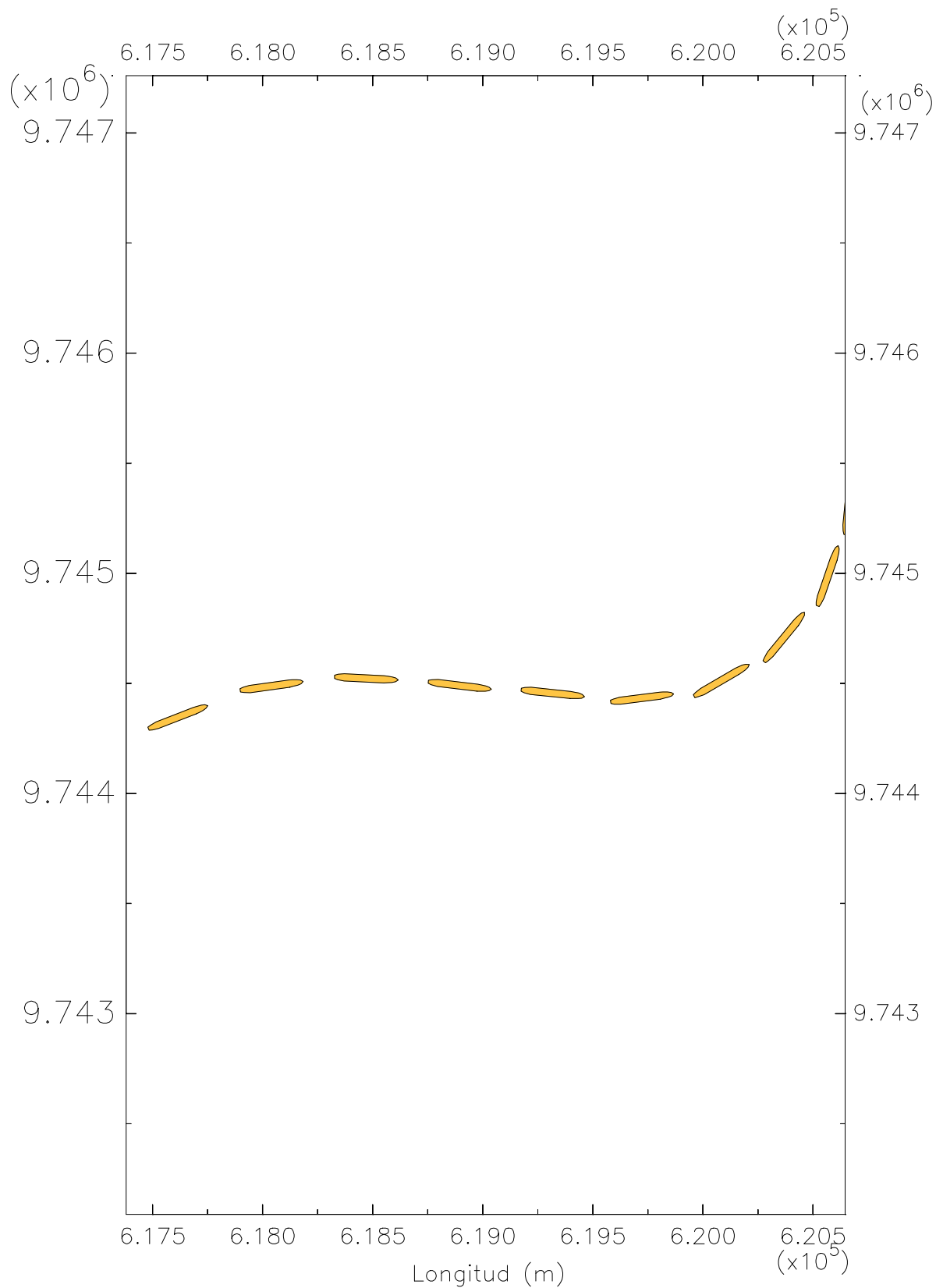




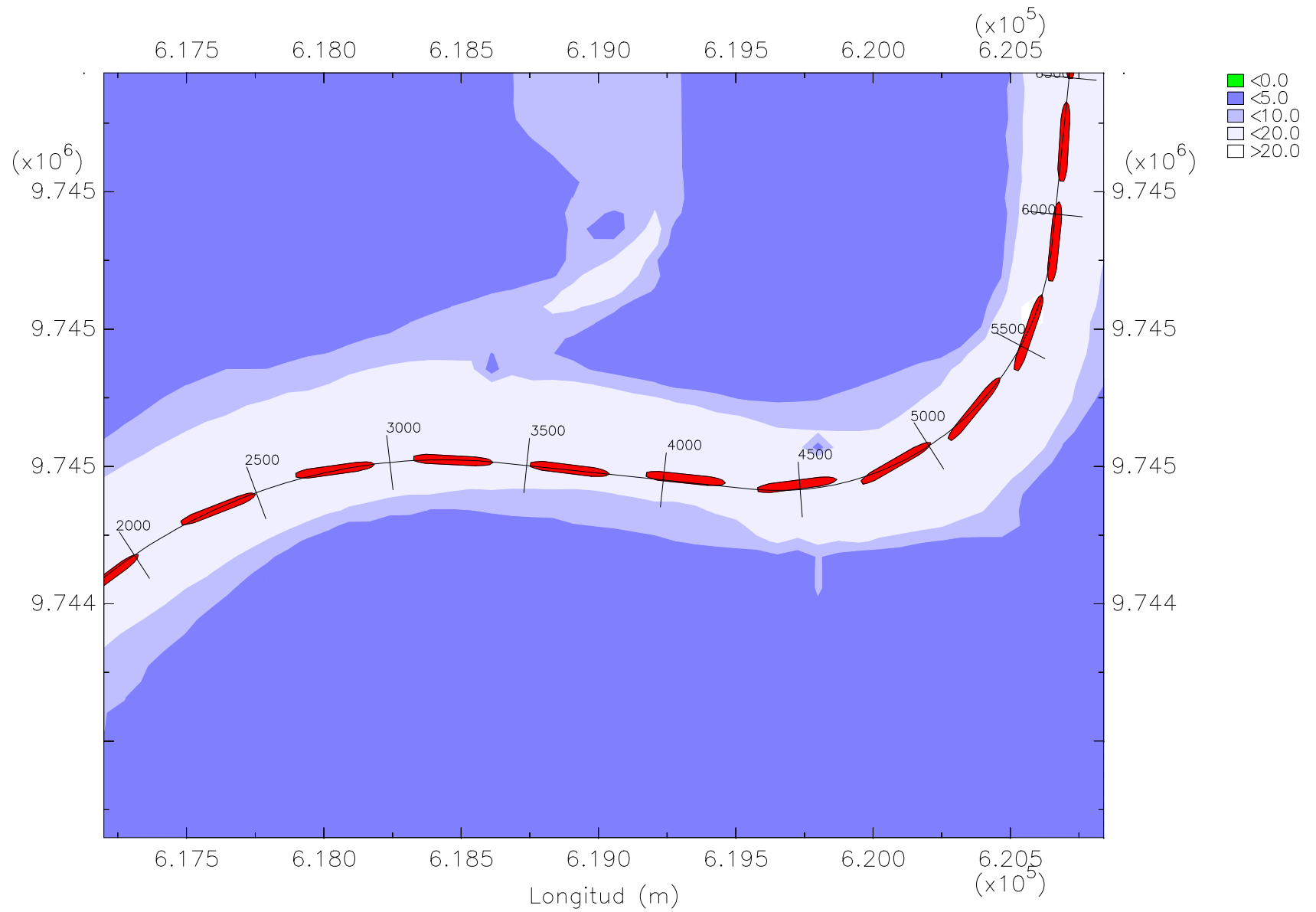


Zona 3 Tramo 2 Eje del canal

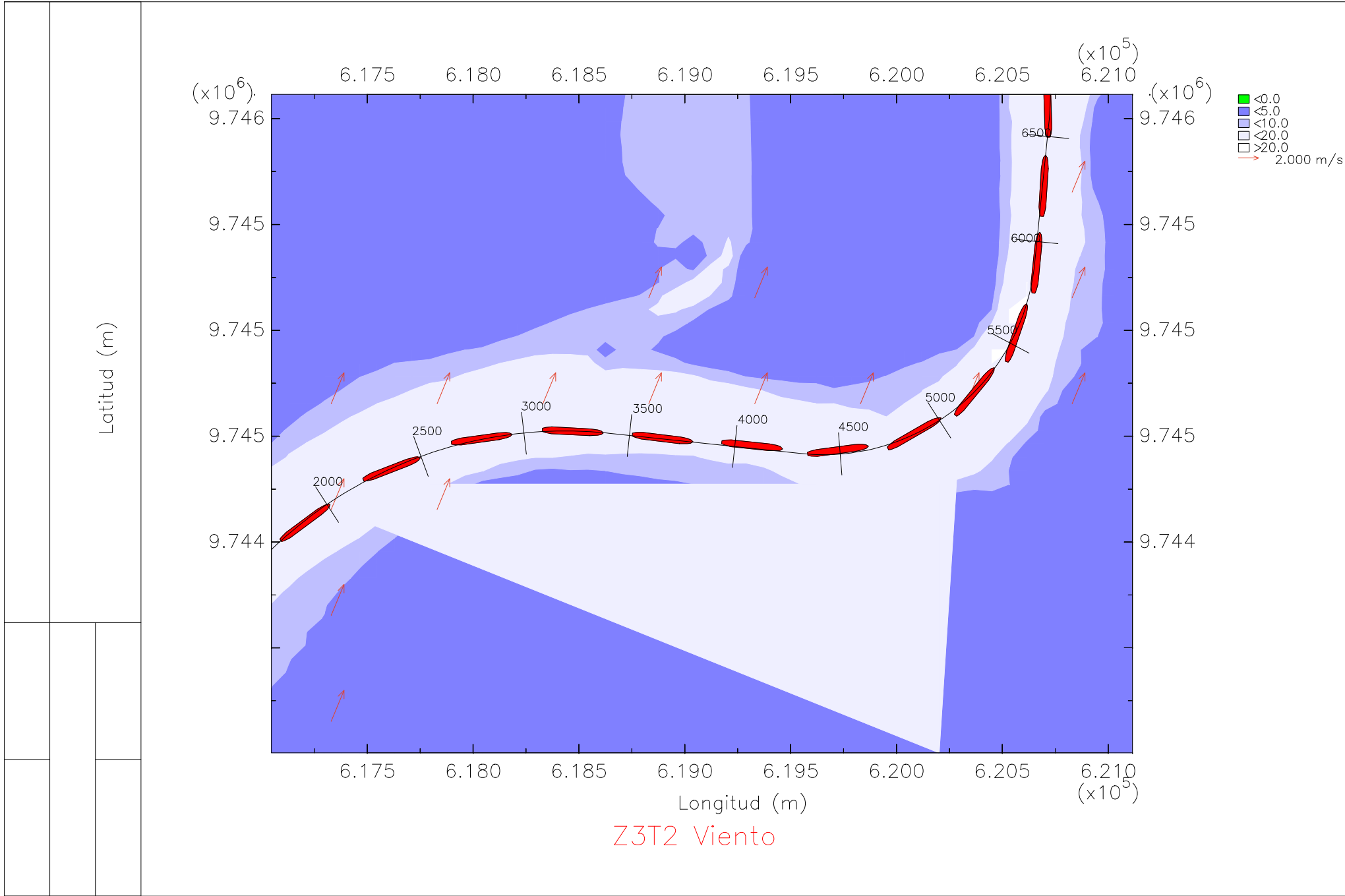
Latitud (m)



Z3T2 Trayectoria del barco portacontenedores panamax



Z3T2 Trayectoria del barco portacontenedores panamax en flujo



Barco portacontenedores

Tipo panamax

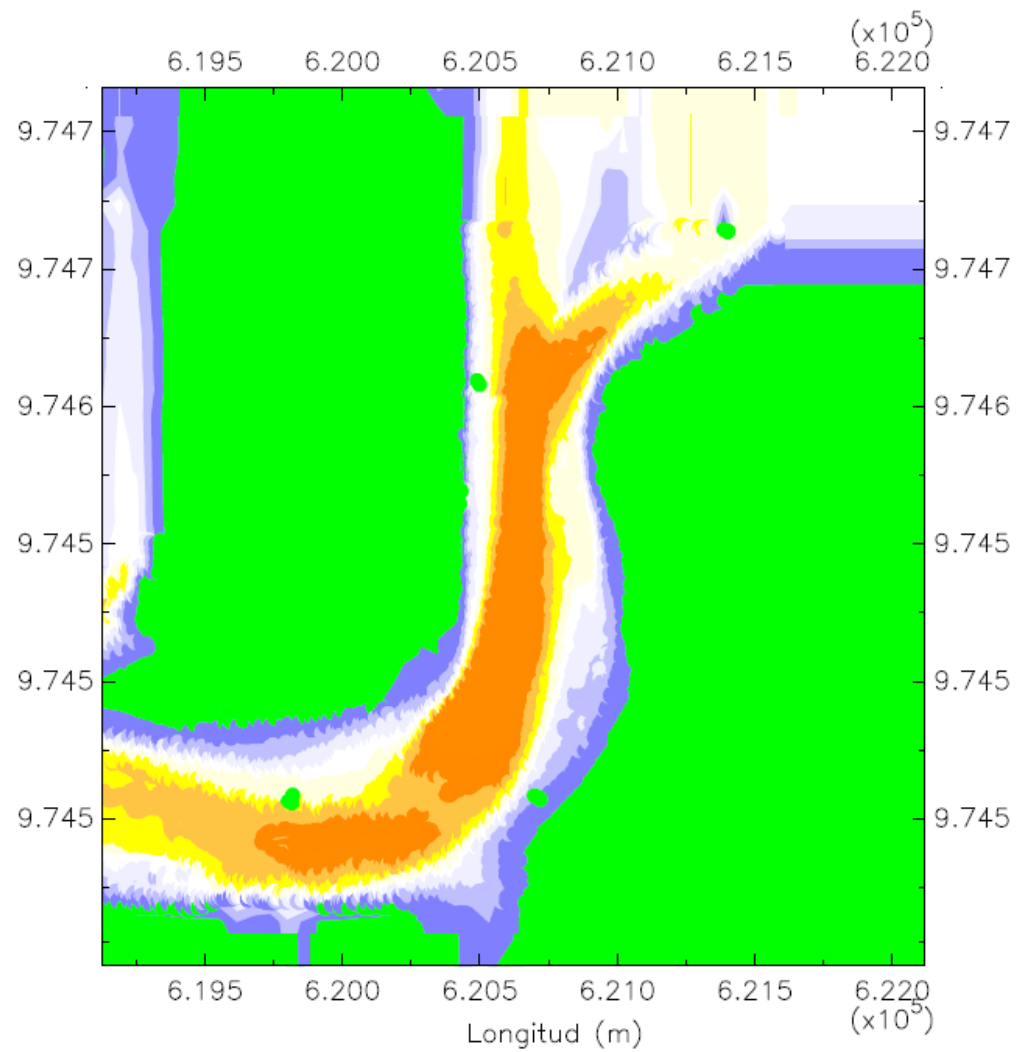
Eslora: 289 m

Manga: 32.20 m

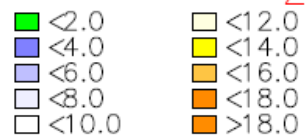
Calado: 11.60 m

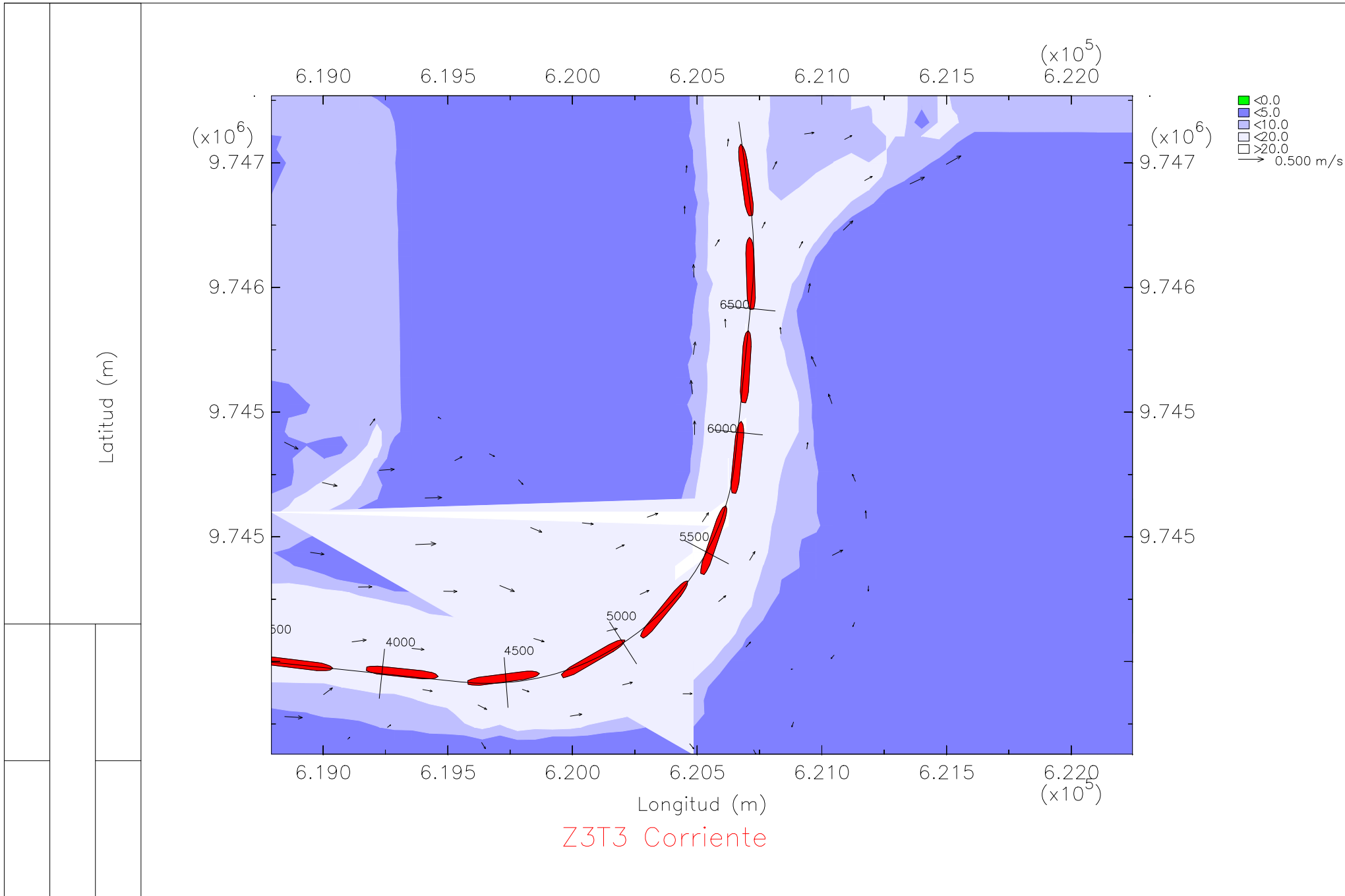
En la zona 3, tramo 3

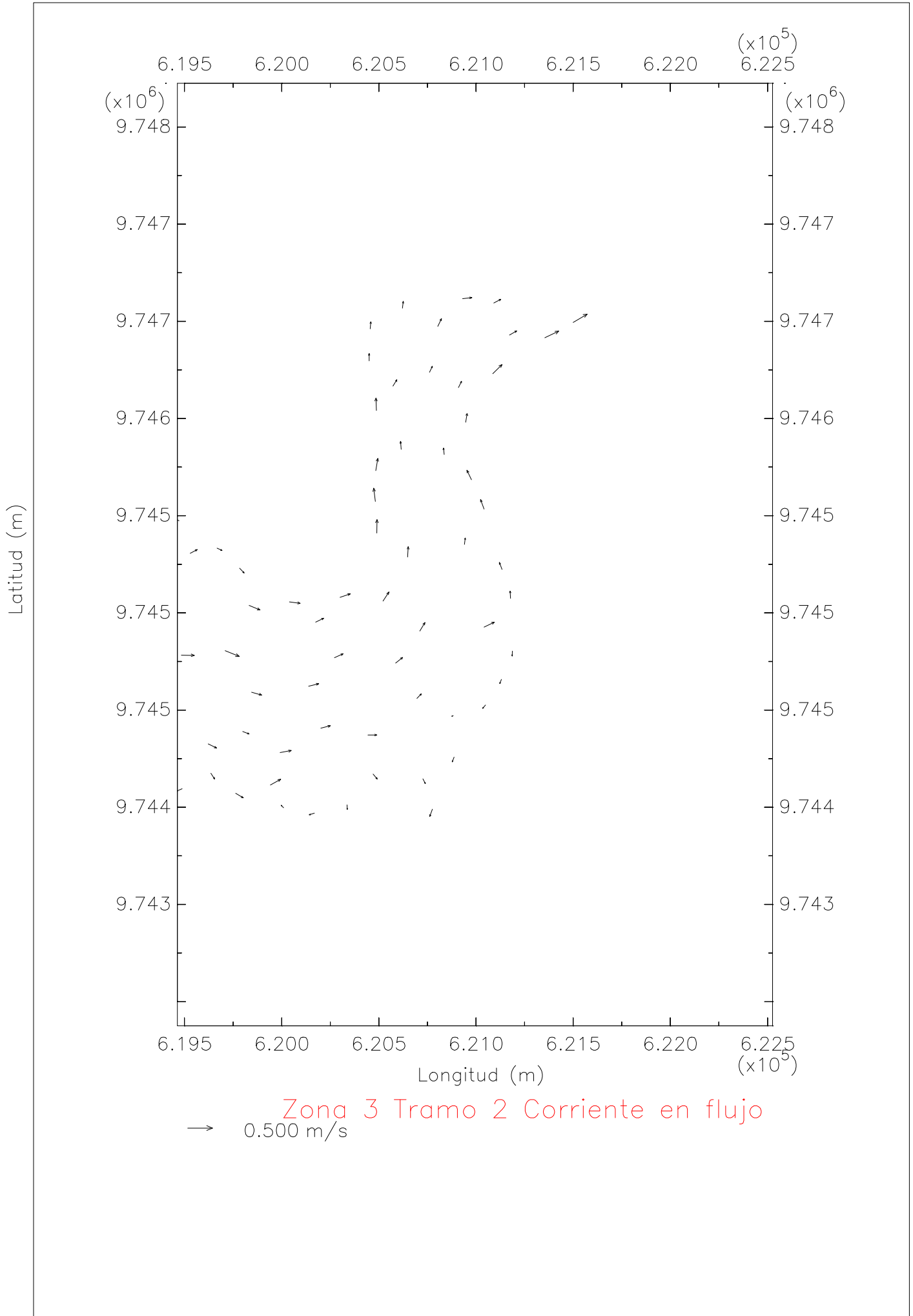
Bajo condiciones de oleaje y llenante

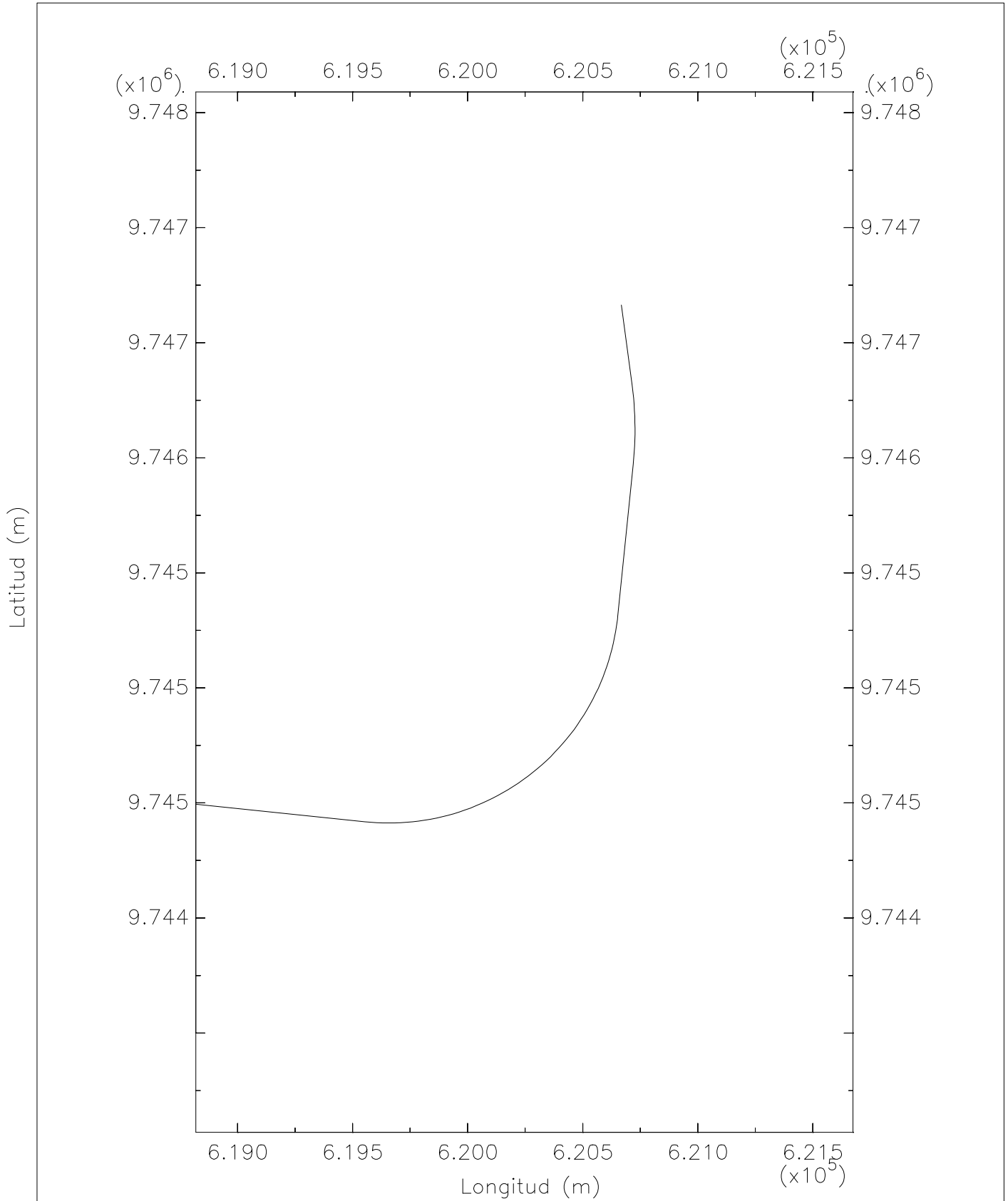


Zona 3 Tramo 3 Profundidad



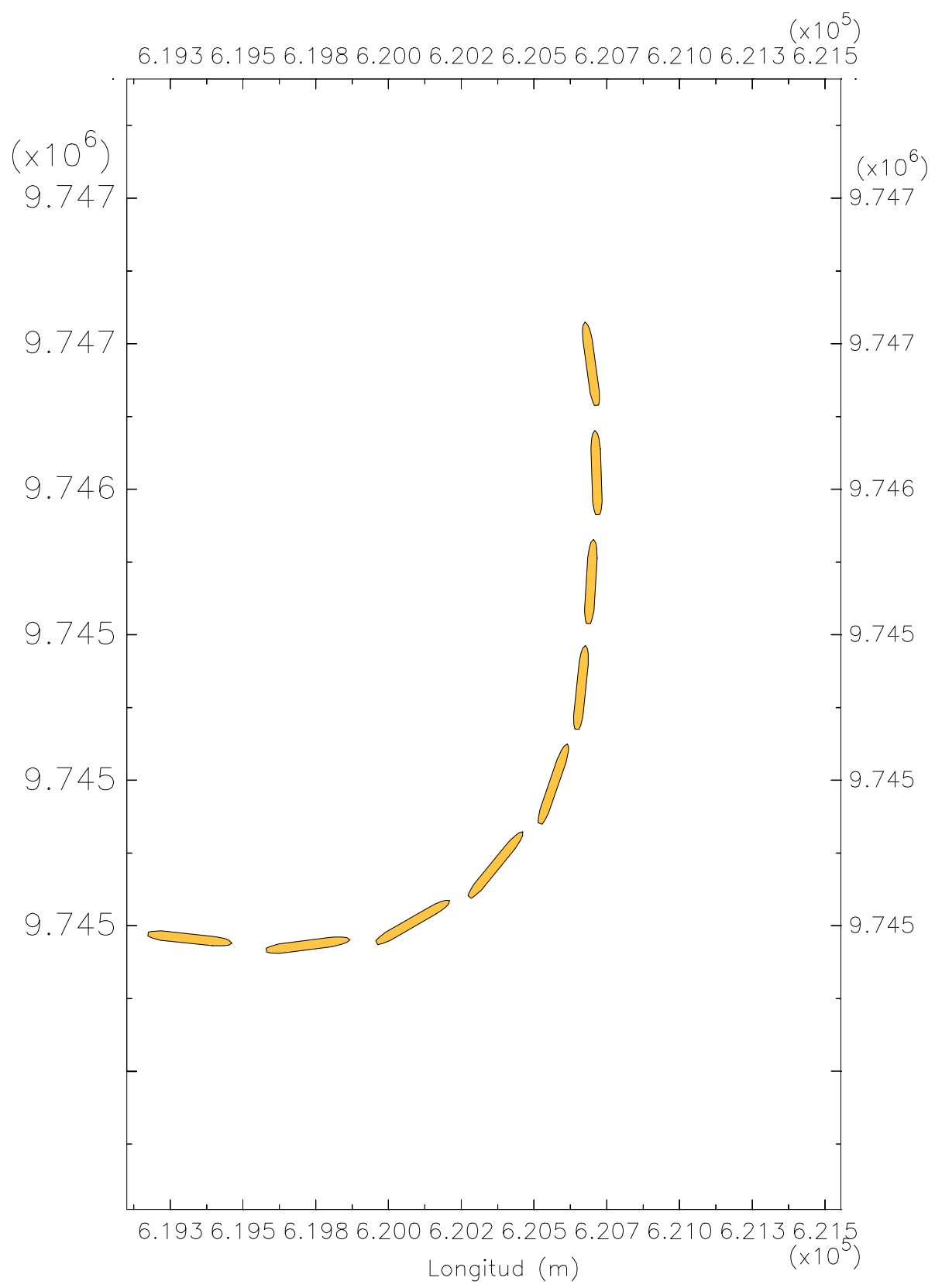






Zona 3 Tramo 3 Eje del canal

Latitud (m)



Z3T3 Trayectoria del barco portacontenedores panamax

